

Description

The ADPRO FastTrace 2 Hybrid Tx by Xtralis is the latest H.264 single- and multi-site video security system supporting up to 16 analogue and/or IP/Megapixel cameras. It has been designed, developed and manufactured by Xtralis, the leader in video security technologies.

When used in conjunction with the ADPRO VideoCentral Platinum management software, the unique combination of video alarm verification, remote site monitoring and control, and evidential quality event recording (H.264), it provides the most flexible multi-site video security system available.

The ADPRO FastTrace 2 Hybrid Tx delivers optimised image quality, efficient bandwidth and hard disk utilisation, in addition to:

- H.264 compression
- Up to 30 ips NTSC/25 ips PAL per camera
- Analogue: CIF/QCIF/2CIF/4CIF – SIF/QSIF/2SIF/4SIF
- Scalable up to 4, 8, 12 or 16 analogue; 4 or 8 analogue and 8 IP or 16 IP (H.264 IP cameras: Axis, Sony 5th generation, Samsung, Sanyo, Arecont, ACTi, Brickcom)
- Fully integrated with ADPRO range of security solutions

Features

- The ADPRO FastTrace 2 Hybrid Tx utilises H.264 compression technology which optimises bandwidth utilisation while providing the highest quality video with the lowest bandwidth.
- Dual codec (analogue cameras) or use of Dual stream (IP cameras) for independent event recording and viewing quality settings (per camera).
- One audio input per video input for synchronised audio recording on event.
- The intuitive web interface gives authorised users remote access to live and recorded video over the network, either multicast or unicast.
- Provides extremely fast searches through large amounts of event recorded video with unique post-record metadata motion search capability. Results are presented on a timeline in seconds without large video data transfers across the network.
- The ADPRO FastTrace 2 Hybrid Tx can be managed and configured from the intuitive FastTrace 2 internet browser interface.
- Integrates (optional) on-board video analytics capabilities (up to 4 channels) for indoor loitering detection and outdoor perimeter detection (sterile zone detection).

Video Alarm Verification

- Live and event recorded video transmission, two-way audio, remote camera control and flexible integration capabilities provide full remote site surveillance and control, eliminating the need for on-site guards.
- Event-based video transmission pushes video on alarm from the remote site to the ADPRO VideoCentral Platinum remote video and alarm management software and ADPRO M3000 command and control software.
- Rapid assessment of event video alarm images enables the cause of alarms to be viewed quickly and efficiently, allowing for real time intervention as necessary and minimising nuisance alarm responses.
- Use ADPRO FastTrace 2 Hybrid Tx and the ADPRO VideoCentral Platinum remote video and alarm management software or ADPRO M3000 command and control software for centralised management of multiple remote sites to improve efficiency and reduce personnel costs.
- An SDK interface is available to support direct integration to 3rd party receiving software. See the ADPRO Advantage Programme for further information.



Key Benefits

- H.264 best-in-class video compression, highest quality video with lowest bandwidth
- Dual codec (analogue cameras) or use of Dual stream (IP cameras) for totally independent recording and viewing quality settings (per camera)
- Resolutions:
 - Analogue (PAL/NTSC): CIF/SIF, QCIF/QSIF, 2CIF/2SIF, 4CIF/4SIF
 - IP: up to HD/MP resolution (depending on the camera)
- Intuitive Web interface for viewing live or recorded video and system configuration
- Automatic video alarm transmission to ADPRO VideoCentral Platinum and ADPRO M3000 software
- CMS control override function
- Two-way audio capability, one bi-directional half-duplex audio channel available per video channel with optional audio switcher
- Extremely fast post-record metadata motion search capability
- 10 custom settings for live viewing
- Local on-board input/outputs and extended input/outputs with up to 128 total input/outputs via optional Ethernet PoE modules
- Camera supervision for contrast, no video signal and camera tamper (moved or defocused)
- Alarm transmission capability:
 - Primary IP/3G (optional*)
 - Backup 3G (optional*)
 - Support for Dynamic IP addresses (DNS)
- Communication channel supervision via automatic Site Pulse watchdog signal
- Time synchronisation via NTP time servers
- Integrated PTZ telemetry support with PTZ presets on alarm (RS485, via Coax)
- Small desktop case - 19" rack mount possibility
- SDK to interface to 3rd party receiving software
- High Level Interface to ADPRO Presidium intelligent video analytics platform
- Can be upgraded to a unit with extended continuous recording capabilities via licencing
- On-board optional video analytics extensions for:
 - Indoor Loitering Detection: detects loitering persons, even when they remain static for a long time
 - Outdoor Perimeter Detection: designed for outdoor sterile zone monitoring

* 3G-modem not included - For more information, please contact your Xtralis representative.

ADPRO® FastTrace™ 2 Hybrid Tx

Network Video and Audio
Event Recorder / Transmitter

Specifications

Video Input	4, 8, 12 or 16 analogue; 4 or 8 analogue and 8 IP or 16 IP (H.264 IP cameras: Axis, Sony 5th generation, Samsung, Sanyo, Arecont, ACTi, Brickcom). The latest list of compatible IP cameras and their respective integrated functionality is available on our website.
Video Output	SVGA – Multiple matrix type views
Video Compression	H.264
Video Resolution	Analogue (PAL/NTSC): CIF/SIF, QCIF/QSIF, 2CIF/2SIF, 4CIF/4SIF IP: up to HD/MP resolution (depending on camera)
Images/Second	Analogue/IP: PAL/NTSC: up to 25/30 ips
Bandwidth Consumption	6 ips CIF, 70 kb/sec; 12 ips 4CIF, 400 kb/sec
Bandwidth Management	Configurable variable or constant bitrate Configurable bandwidth limiter
Hard Disks	500 GB onboard storage for event recording. Disk supervision and HDD Information page
Audio Input	1 per camera
Audio Output	Standard 1 line level output, Optional: up to 1 per camera via audio switcher(s)
Motion Detection	4 zones adjustable per camera
System	PC platform - Linux OS
Audio Compression	OggVorbis Codec 16 Kbps
Command Inputs	On the box (max. 20, depending on the model) or via Ethernet I/O module with PoE (up to 128)
Relay Outputs	On the box (max. 8, depending on the model) or via Ethernet I/O module with PoE (up to 128)
Network Protocols	TCP, UDP, TELNET, HTTP, SMTP, RTSP, RTP, NTP
Application Update	Local and remote
Web Server	Integrated
Com Ports	USB-RS232 for serial comms USB-RS232/RS485 (or Basic on the box I/O-RS485 port) for PTZ control
Ethernet	10/100/1000 Base-T, auto detection, full duplex, RJ45
Recording Support	1 SATA hard disk (500 GB) for event recording (up to 16,000 event recordings per day, 15 seconds per event recording)
Recording Type	Event (see also recording support), Input, Motion Detection, Alarm Over IP
Remote Visualisation	Web client; Windows XP, Vista, Windows 7, Server 2003
PTZ Cameras	Via RS485 or via coax, extensive list available
Management	Web browser interface, ADPRO VideoCentral Platinum and ADPRO M3000
Power Supply	90-260 VAC, 50/60 Hz
Operating Temperature	5 – 40 °C (41°F – 104°F) Ethernet I/O module : 0 – 40 °C (32°F – 104°F)
Humidity	20 – 93 % rh – non-condensing Ethernet I/O module : <= 93 % rh – non-condensing
Ordering Information	Basic <ul style="list-style-type: none"> Per 4 or 8 analogue and/or per 8 IP video inputs Model: 19" rack Options (ordering with the basic system) <ul style="list-style-type: none"> Basic on the box I/O card (8 monitored inputs, 4 relay Outputs) Extension on the box I/O card (12 monitored inputs, 4 relay outputs) Audio output switcher, interface for PTZ over coax. USB-RS232 cable, USB-RS485 cable.
Warranty	Twenty four (24) months on all components

ADPRO FastTrace 2 Hybrid Tx - 19 inch Rack

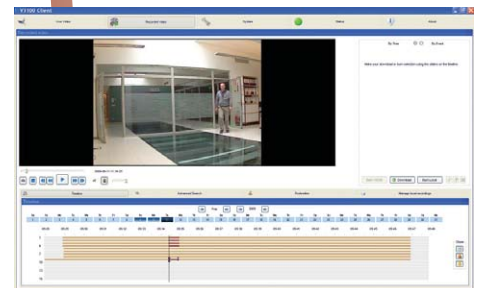


Dimensions	W: 445 mm (17.52") H: 132 mm (5.20") L: 300 mm (11.8")
-------------------	--

ADPRO VideoCentral Platinum Live Multi-screen



Web-Browser Interface



Ethernet I/O with PoE

- Din Rail installation
- 4...16 digital inputs
- 4...16 relay outputs
- NC/NO
- 3 LEDs for operational status of ADPRO FastTrace 2 Hybrid Tx
- Watchdog and sounder



www.xtralis.com

The Americas +1 781 740 2223 Asia +852 2916 8894 Australia and New Zealand +61 3 9936 7000
UK and Europe +44 1442 242 330 Middle East +962 6 569 1083

The contents of this document are provided on an "as is" basis. No representation or warranty (either express or implied) is made as to the completeness, accuracy or reliability of the contents of this document. The manufacturer reserves the right to change designs or specifications without obligation and without further notice. Except as otherwise provided, all warranties, express or implied, including without limitation any implied warranties of merchantability and fitness for a particular purpose are expressly excluded.

This document includes registered and unregistered trademarks. All trademarks displayed are the trademarks of their respective owners. Your use of this document does not constitute or create a licence or any other right to use the name and/or trademark and/or label.

This document is subject to copyright owned by Xtralis AG ("Xtralis"). You agree not to copy, communicate to the public, adapt, distribute, transfer, sell, modify or publish any contents of this document without the express prior written consent of Xtralis.

Doc. 20142_03

ADPRO[®]
by **xtralis**[™]